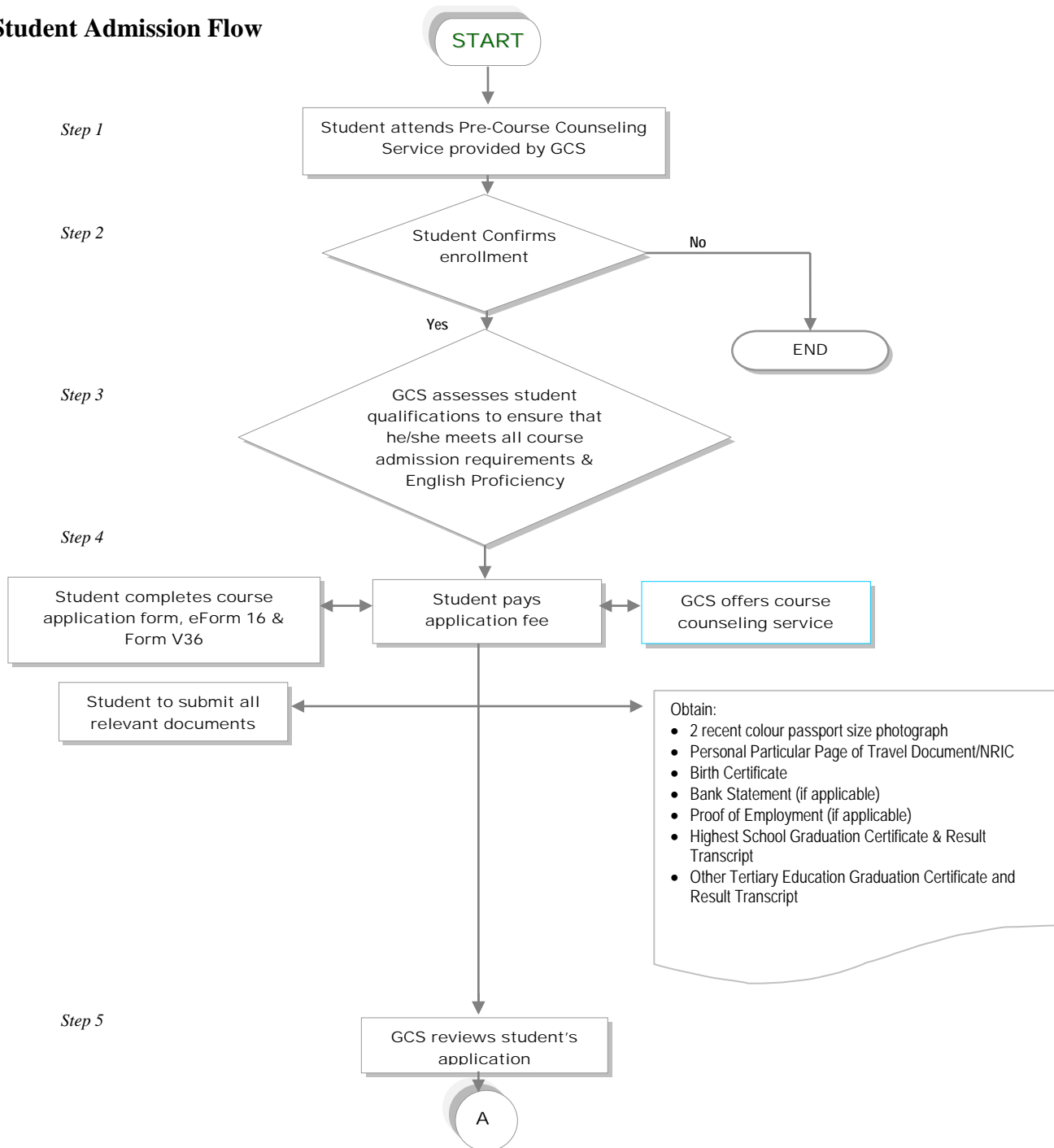
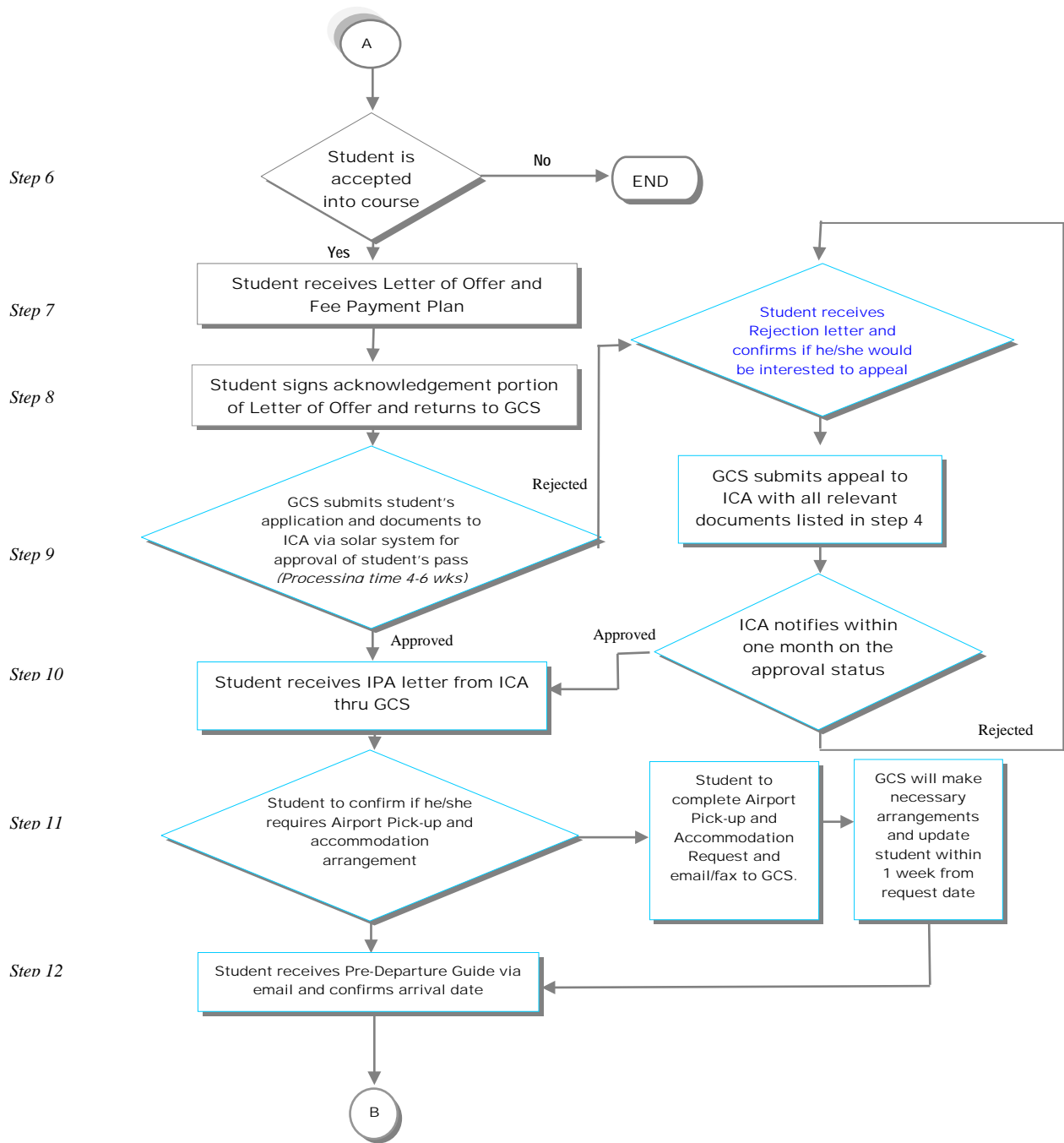
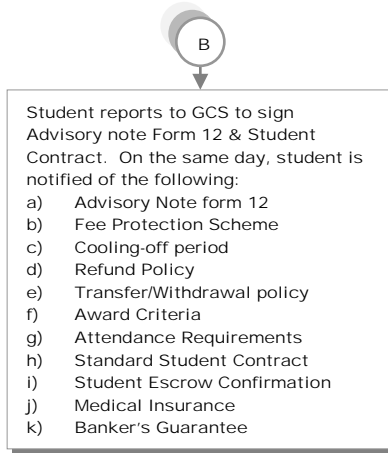


## Student Admission Flow



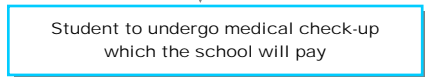


Step 13



- Banker's Guarantee
- Cashier's Order/SGD – Student required to open a bank account.

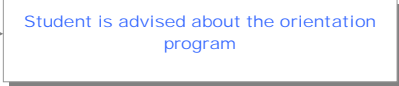
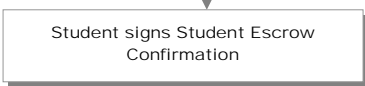
Step 14



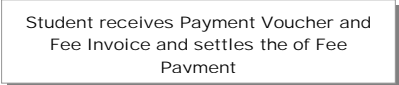
Step 15



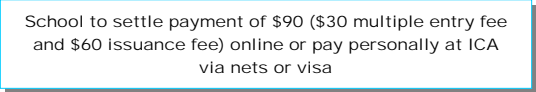
Step 16



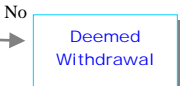
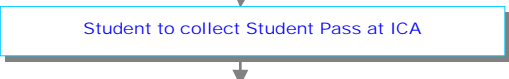
Step 17



Step 18



Step 19



- Bring all documents stated:
1. ICA in-Principal Approval Letter
  2. Passport/Travel document with a valid Visit Pass & copy of the personal particulars page
  3. Medical Report Form and original copy of the laboratory report
  4. Print-out of Student's Pass application e-Form 16. The print out must be duly signed by the applicant
  5. Security Bond
  6. Terms & Conditions of issue for LTP Card
  7. Passport size-photograph (against a white background)
  8. Original Birth Certificate (if Required)
  9. Original Educational Qualifications (if Required)

Applicable to International Students only